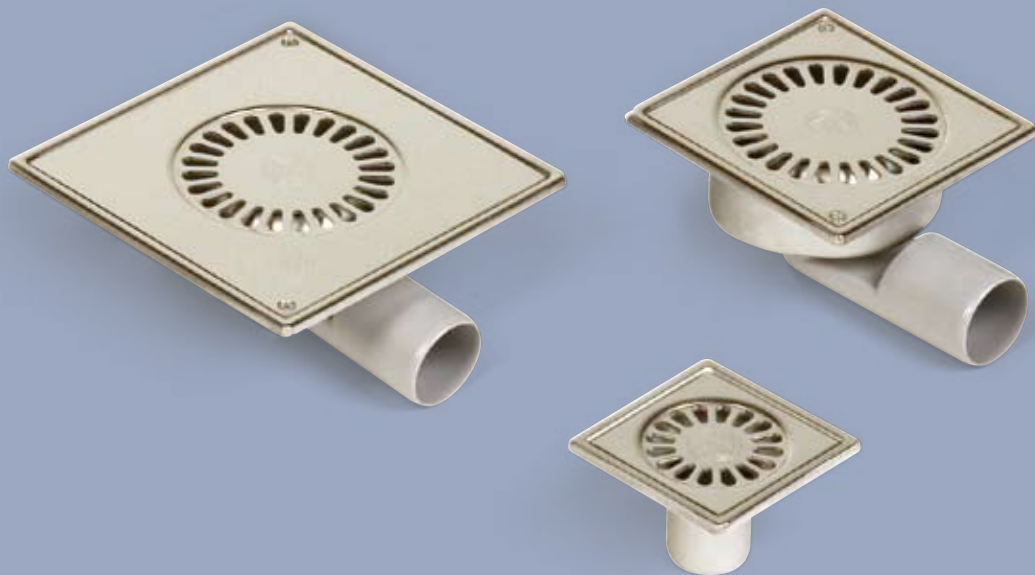


BLÜCHER® Compact

The flexible drains for easy solutions in housing and commercial applications



BLÜCHER®

K E E P I N G U P T H E F L O W

STAINLESS STEEL DRAINAGE SYSTEMS

BLÜCHER® Compact Drain

Flexible drains with water trap for housing



Advantages

- Connection pipe allowing vertical or horizontal outlet
- Low installation height
- High flow capacity

Applications

For concrete, tiled and epoxy flooring, for instance:

- Private housing bathrooms
- Hotel bathrooms

Product details

- Frame and grating in polished stainless steel
- Integrated water trap

Options

- Frame sizes from 97x97 to 197x197 mm
- Water seal height 25, 30 or 50 mm
- Flange for liquid membrane

4 drains in one

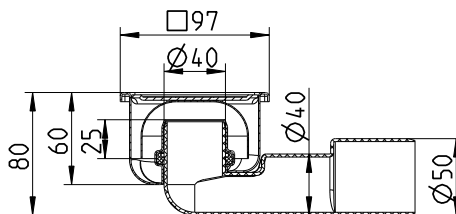


Compact Drain 100 mm with 25 mm water seal height



Drain with vertical/horizontal outlet - 4 options

Capacity 0,4/0,5 l/s
 Outlet horizontal Ø40/50 mm
 Outlet vertical Ø40/50 mm
 Item no.:
 Without screw lock 182.100.040
 With screw lock 182.101.040

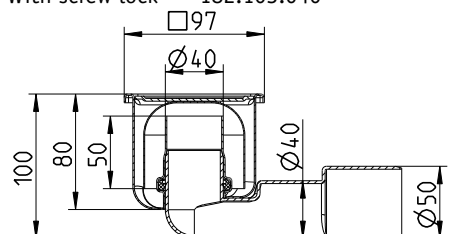


Compact Drain 100 mm with 50 mm water seal height



Drain with vertical/horizontal outlet - 4 options

Capacity 0,5/0,7 l/s
 Outlet horizontal Ø40/50 mm
 Outlet vertical Ø40/50 mm
 Item no.:
 Without screw lock 182.102.040
 With screw lock 182.103.040

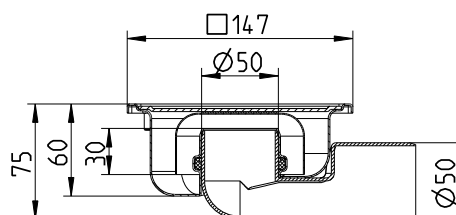


Compact Drain 150 mm with 30 mm water seal height



Drain with vertical/horizontal outlet - 2 options

Capacity 0,5/0,7 l/s
 Outlet horizontal Ø50 mm
 Outlet vertical Ø50 mm
 Item no.:
 Without screw lock 182.150.050
 With screw lock 182.151.050

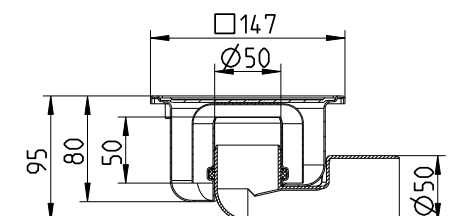


Compact Drain 150 mm with 50 mm water seal height

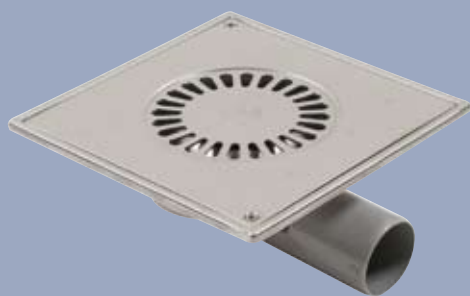


Drain with vertical/horizontal outlet - 2 options

Capacity 0,5/0,7 l/s
 Outlet horizontal Ø50 mm
 Outlet vertical Ø50 mm
 Item no.:
 Without screw lock 182.152.050
 With screw lock 182.153.050

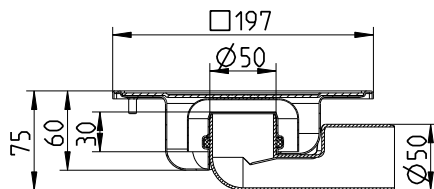


Compact Drain 200 mm with 30 mm water seal height



Drain with vertical/horizontal outlet - 2 options

Capacity	0,5/0,7 l/s
Outlet horizontal	Ø50 mm
Outlet vertical	Ø50 mm
Screw lock	Included
Item no.	182.201.050

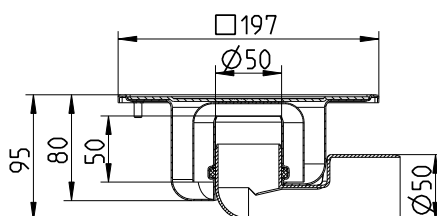


Compact Drain 200 mm with 50 mm water seal height

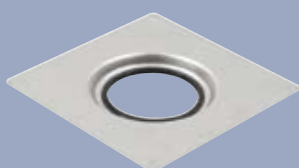


Drain with vertical/horizontal outlet - 2 options

Capacity	0,5/0,7 l/s
Outlet horizontal	Ø50 mm
Outlet vertical	Ø50 mm
Screw lock	Included
Item no.	182.203.050

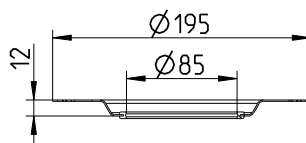


Flange for Compact Drain 100 mm

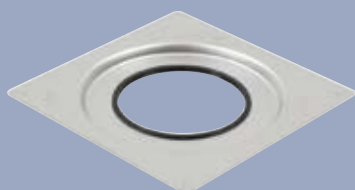


Flange for liquid membrane for Compact drain

Dimension	195 x 195 mm
Diameter	Ø85 mm
Height	12 mm
Item no.	620.300.024

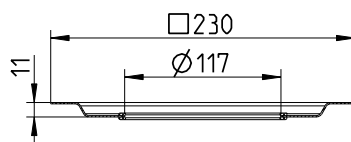


Flange for Compact Drain 150 mm and 200 mm



Flange for liquid membrane for Compact drain

Dimension	230 x 230 mm
Diameter	Ø117 mm
Height	11 mm
Item no.	620.300.025



BLÜCHER® Compact Drain

Easy drainage without water trap for housing



Advantages

- Low installation height
- High flow capacity

Applications

Indoor as point outlet connected to a "P" water trap. For concrete, tiled and epoxy flooring, for instance:

- Private housing bathrooms
- Hotel bathrooms
- Balconies

Product details

- Frame and grating in polished stainless steel
- Screw lock included

Options

- Frame sizes 97x97 and 147x147 mm
- Outlet Ø32-100 mm
- Capacity 0,6-1,0 l/s



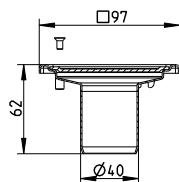
Compact Drain 100 mm

- vertical outlet



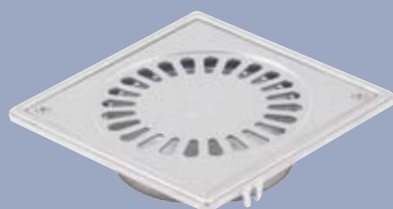
Drains with vertical outlet Ø40/50/75 mm

Capacity	0,6 l/s
Outlet vertical	Ø40/50/75 mm
Height	62/74/26 mm
Screw lock	Included
Item no.:	
Outlet Ø40 mm	183.101.040
Outlet Ø50 mm	183.101.050
Outlet Ø75 mm	183.101.075



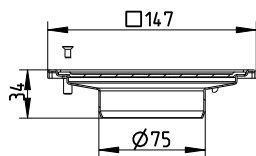
Compact Drain 150 mm

- vertical outlet



Drains with vertical outlet Ø75/100 mm

Capacity	1,0 l/s
Outlet vertical	Ø75/100 mm
Height	34/35 mm
Screw lock	Included
Item no.:	
Outlet Ø75 mm	183.151.075
Outlet Ø100 mm	183.151.100



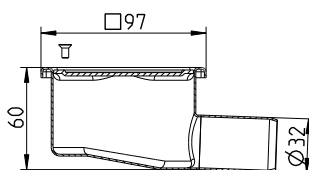
Compact Drain 100 mm

- horizontal outlet



Drain with horizontal outlet

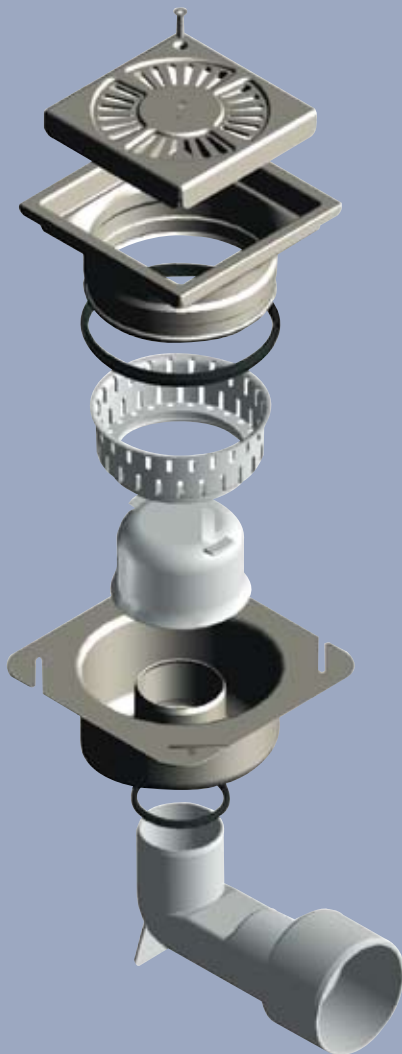
Capacity	0,5 l/s
Outlet horizontal	Ø32 mm
Height	60 mm
Screw lock	Included
Item no.	182.105.032



BLÜCHER® Compact Drain

Flexible drainage for commercial applications

4 drains in one



Advantages

- Connection pipe allowing vertical or horizontal outlet
- Low installation height
- Height adjustable
- High flow capacity

Applications

For concrete, tiled and epoxy flooring, for instance:

- Supermarkets
- Fitness centres

Product details

- Frame and grating in polished stainless steel AISI 304
- Water trap and filter basket in plastic
- Integrated flange for liquid membrane
- Grating 197x197 mm
- Earth bonding
- Load capacity 1000 kg

Options

- Stainless steel AISI 316L with grating in AISI 304
- Grating without screw lock



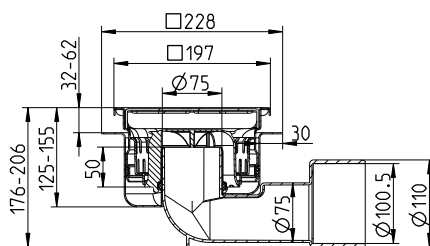
Compact Drain 200 mm

- without screw lock



Drain with vertical/horizontal outlet - 6 options

Capacity	1,5/2,0 l/s
Outlet horizontal	Ø75/100/110 mm
Outlet vertical	Ø75/100/110 mm
Flange	228x228 mm
Item no.:	
AISI 304	782.202.075
AISI316L	782.202.075 S

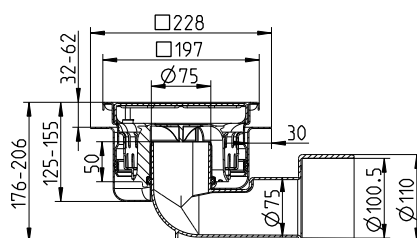
**Compact Drain 200 mm**

- with screw lock



Drain with vertical/horizontal outlet - 6 options

Capacity	1,5/2,0 l/s
Outlet horizontal	Ø75/100/110 mm
Outlet vertical	Ø75/100/110 mm
Flange	228x228 mm
Item no.:	
AISI 304	782.203.075
AISI316L	782.203.075 S





BLÜCHER®

BLÜCHER employs over 300 staff who, through commitment and know how have developed a range of high quality stainless steel drainage systems which are sold throughout the world.

For more information on you local supplier log on to www.blucher.com

BLÜCHER® Compact Drain



KEEPING UP THE FLOW

BLÜCHER · Pugdalvej 1 · DK-7480 Vildbjerg · Tel.: +45 99 92 08 00 · mail@blucher.com · www.blucher.com